

BARIATRIC PRESSURE REDISTRIBUTION MATTRESSES

Ensuring Comfort and Care



Pressure ulcers are a frequent and serious health risk. Prevalent in many healthcare and community settings, particularly for those with restricted mobility, suffering from poor nutrition, or with other debilitating conditions. Pressure ulcers are costly in terms of human suffering and medical resources and it is widely recognised that 95% of them are preventable. They can require substantial time, money and effort to heal. Twenty five percent of all stage 4 pressure ulcers result in death.

Most pressure ulcers form on the lower back below the waist, the hip bone, and on the heels. With patients confined to a bed or a chair however, pressure ulcers can also form on other bony prominences such as the knees, ankles, shoulder blades, back of the head, ears and spine and for those in chairs or wheelchairs, the exact spot where pressure ulcers form depends on their sitting position.

Leaders in pressure redistribution and skin integrity products, MacMed Healthcare have a range of specialised multi-density, pressure redistribution mattresses developed for low to high risk patients.

MACMED PRESSURE REDISTRIBUTION MATTRESSES

All MacMed Healthcare mattresses redistribute the pressure exerted at the interface between the patient and the supporting surface. This is achieved by maximising the contact surface area and redistributing pressure without compromising surrounding tissue.

Multi-density layers of the finest hospital grade foams provide immediate comfort and immersion, which together with the redistribution of the patient's weight effectively reduces interface pressure against the skin providing pressure redistribution, promoting skin integrity and patient comfort.



“70% OF THE ADULT POPULATION IN AUSTRALIA ARE OVERWEIGHT OR OBESE”

The West is experiencing an epidemic directly affecting a greater proportion of the population than did either the Black Death of the 14 century or the influenza epidemic that occurred during and after the First World War.

Almost 500,000 Australians are “super obese”, a five-fold increase over two decades, with weight-loss surgeons reporting they are treating more patients at serious risk of premature death.

Obesity experts estimate 2 to 3 per cent of the population are so large they have outgrown obese and morbidly obese classifications to become super obese - those with a body mass index of 50 or more. Some weigh more than 250 kilograms.

Obesity has reached epidemic proportions globally, with more than 1 billion adults overweight - at least 300 million of them clinically obese - and is a major contributor to the global burden of chronic disease and disability. Obesity is

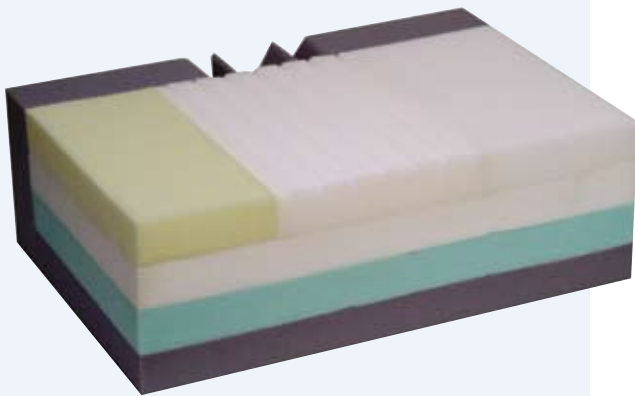
a complex condition, with serious social and psychological dimensions, affecting virtually all ages and socioeconomic groups.

Obesity and overweight pose a major risk for serious diet-related chronic diseases, including type 2 diabetes, cardiovascular disease, hypertension and strokes, and certain forms of cancer. The health consequences range from increased risk of premature death, to serious chronic conditions that reduce the overall quality of life.

The more life-threatening problems fall into four main areas: CVD problems; conditions associated with insulin resistance such as type 2 diabetes; certain types of cancers, especially the hormonally related and large-bowel cancers; and gallbladder disease, while the non-fatal, but debilitating health problems associated with obesity include respiratory difficulties, chronic musculoskeletal problems, skin problems and infertility.

Bariatric patients with limited mobility are at extremely high risk of developing pressure ulcers and the treatment and care of bariatric patients presents special challenges for healthcare providers and caregivers.

STANDARD BARIATRIC MATTRESS

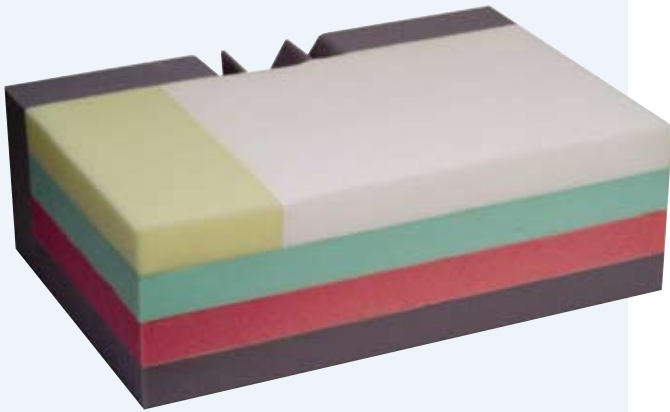


***Ideally recommended for patients
from 150kg to 300kg***

Patient protection is achieved by using a multi-density, four-tier system of hospital grade foams with a visco-elastic heel shield and a modulated sacral insert for the immediate comfort and immersion of the patient's contact area which redistributes the patient's weight effectively reducing peak interface pressure against the skin.



ULTIMATE BARIATRIC MATTRESS

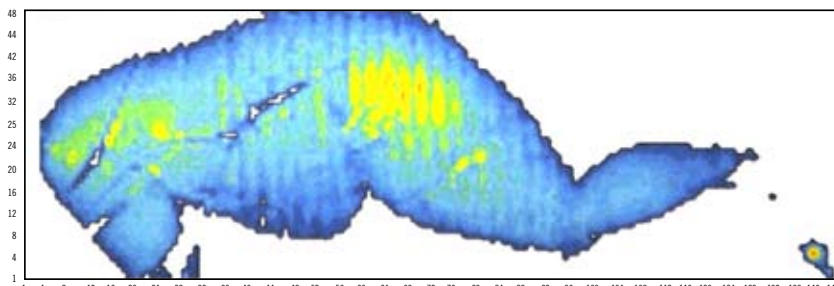
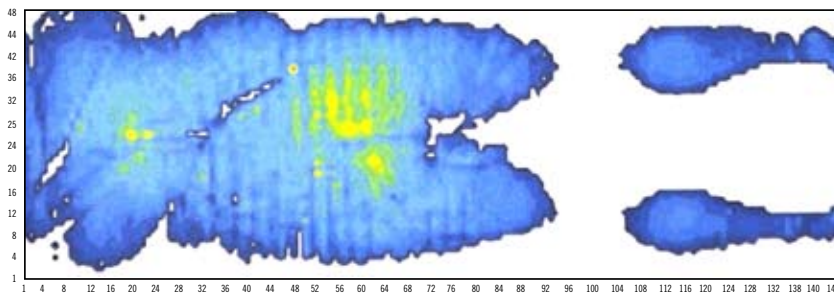
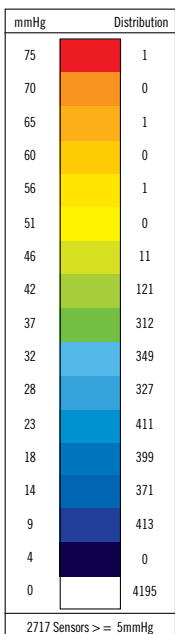


Patient protection is achieved by using a multi-density, four-tier system of hospital grade foams with a visco-elastic heel shield and a modulated sacral insert for the immediate comfort and immersion of the patient's contact area which redistributes the patient's weight effectively reducing peak interface pressure against the skin.

Ideally recommended for patients from 200kg to 400kg



PRESSURE MAPPING



The interface pressure between the body of a subject lying on the mattress was measured with the subject lying on their back and also on their side.

Recordings were taken for 5 minutes or until no creep was observed, in each position. The results were analysed and averaged over 3-5 minutes.

Pressure Mapping:
Ultimate Bariatric Mattress, 190kg Male

Note:
All MacMed mattresses have been tested with live subjects.

Comments

The overall or average interface pressure experienced by the subject lying on the mattress was, in all cases, under 35mmHg when lying on his side and under 30mmHg when lying on his back

The high contact area between the subject and the mattress design is a good indication of improved load distribution. This is confirmed by the percentage area that registered pressure values under 50mmHg, being 95% or better in all cases.

BARIATRIC PRESSURE REDISTRIBUTION MATTRESSES

Ensuring Comfort and Care

KEY FEATURES AND BENEFITS

- Proven pressure redistribution capabilities
- Scientifically configured for ultimate support and comfort
- Effective shear and friction management maximising skin integrity
- 100% Latex free
- Covered with a two-way stretch, vapour permeable and waterproof material that is easily cleaned
- Treated with the Ultra Fresh anti-microbial system that is effective against dust mites, bacteria, mould and mildew for the life of the mattress
- Foams are free from pesticides and endorsed by the National Asthma Council
- Lab tested by an Australian NATA accredited laboratory
- PUPPS compliant (Pressure Ulcer Point Prevalence Survey)



THE MACMED COVER

All MacMed mattress covers are manufactured from a scientifically developed two-way stretch, hypo-allergenic fabric MacTech® that is also waterproof and vapour permeable for optimum skin integrity and comfort. Mattresses are available with high frequency welded seams, or a 360° zipper cover with waterfall flap to maximise infection control.

Mattress covers have a 2 year warranty.

ABOUT MACMED HEALTHCARE

Established in January 2000, MacMed Healthcare is the leading manufacturer and provider of superior pressure redistribution and skin integrity products throughout the Australian healthcare sector.

Through a comprehensive range of static mattresses and single cell air mattress overlays, chairs, cushions and wedges, as well as Hip and Skin Protectas and innovative podiatry products, MacMed Healthcare is committed to reducing the incidence and prevalence of pressure ulcers and other skin integrity conditions.

Manufactured from the finest hospital grade materials, all MacMed products are configured to exacting specifications, and rigorously tested by an independent NATA accredited laboratory for suitability, durability and compliance.

MacMed Healthcare has successfully fulfilled major public and private tenders including 6,000 pressure-reduction mattresses in acute care, and an exclusive state-wide procurement for more than 3,000 mattresses in the aged-care sector.

MacMed Healthcare's quality management system is fully certified to AS/NZS ISO 9001:2000.

